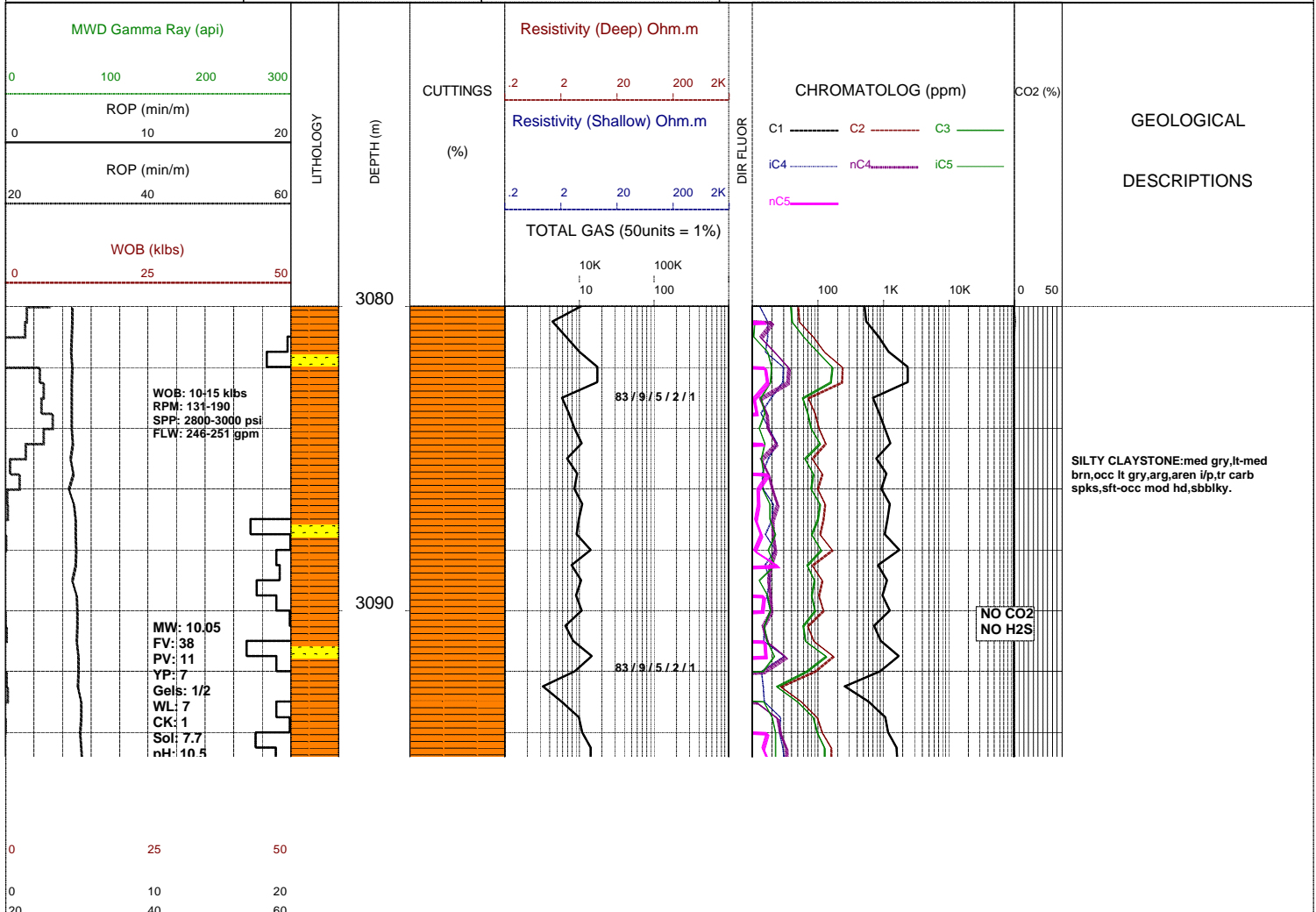


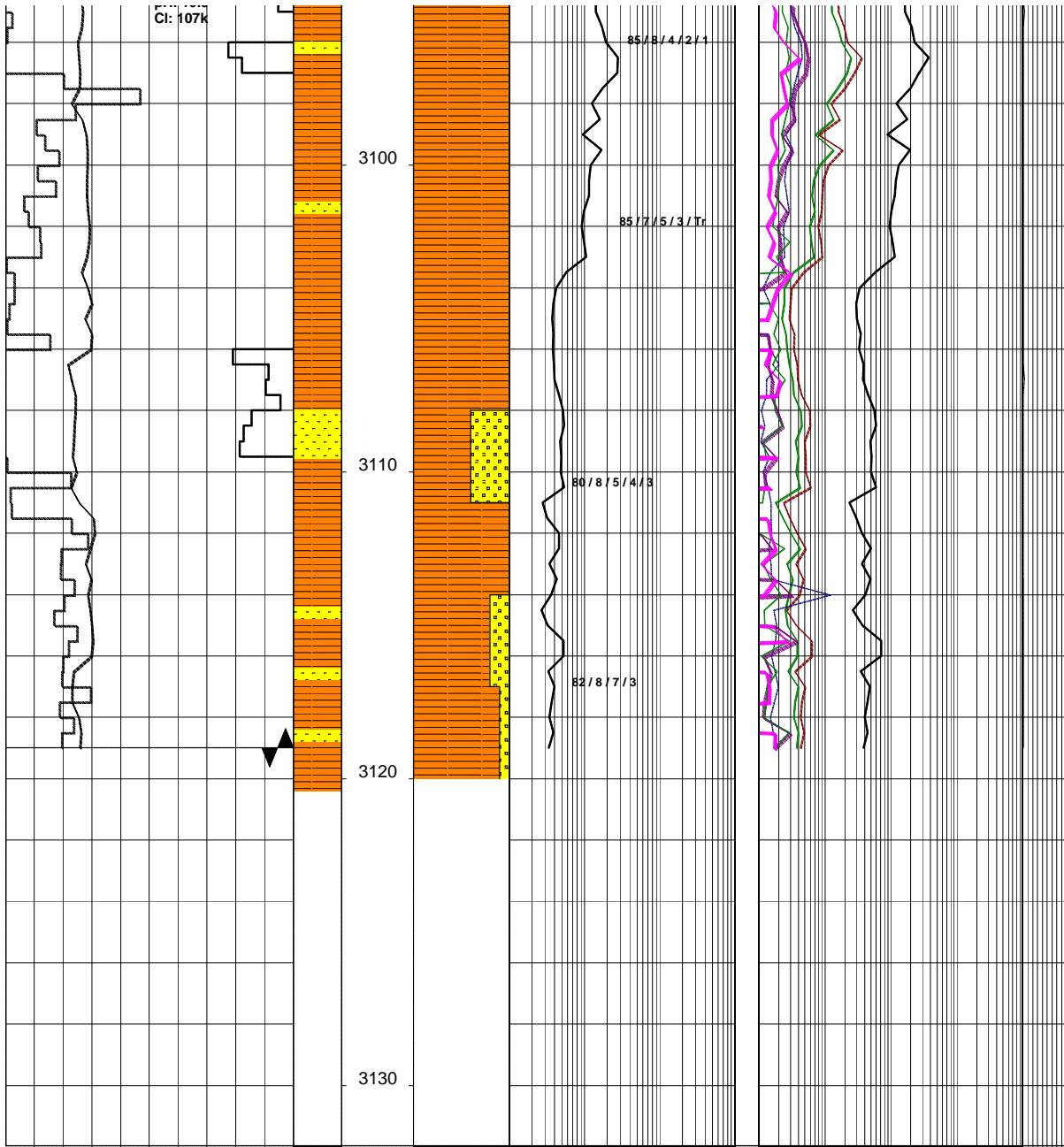
GLENAIRE 1 ST1

Field :	Kelly Bushing : PEP 160	Rig : ENSIGN 32	Open Hole:	Cased Hole:	Loggers : J.SUTTON
Block:	Ground Level : STATUS	Spud Date : 08/09/2006	17.5" (12.25") 307m	13.375" (9.625") 303.5m	N.LUIS
State : VICTORIA	GRS80 Ellipsoid MGA94 Zone54 :	TD Date : XX/XX/2006	12.25" (8.5") 1255m	9.625" (7.0") 1252m	J.TRETHEWEY
Country : AUSTRALIA	Lat. : 37°34'47.03S	Total Depth : VVV	8.5" XXXXm		
Scale : 1/ 200	Long. : 140°59'52.25E	Final Status : WWW		RRRR SSSS AAA	

LITHOLOGY	ACCESSORIES	DRILLING DATA	ABBREVIATIONS
Conglomerate Coarse Sandstone Med Sandstone Calcareous Sst Silty Sandstone Siltstone Carb. Siltstone Calc. Siltstone Clay Limestone Dolomite Coal Anhydrite Gypsum Igneous Volcanic Metamorphic Cement	Pyrite Siderite Glauconite Feldspar Mica Ferrous Chert Calcareous Dolomitic Carbonaceous Lithoclast Breccia Foraminifera Corals Inoceramus Bryozoa Plant remains Fossils	Casing Shoe Bit Trip Wiper Trip Core DST Deviation Survey MUD DATA MW - Mud Weight (lb/gal) FV - Funnel Viscosity (s/qt) PV - Plastic Viscosity (cps) YP - Yield Point (lb/100ftsq) Gel - Gel Strength (10sec) WL - Water Loss (cc/30min) pH - Acidity / Alkalinity Ck - Cake (32nd/inch) O/W/S - Oil / Water / Solids Cl - Chlorides (mg/L) K+ - Potassium (mg/L) Rmf - Res. Mud Filtrate (ohmm)	BOPD - Barrels of Oil Per Day OG - Over Gauge BWPD - Barrels of Water Per Day OH - Open Hole CG - Connection Gas OTS - Oil To Surface CO - Circulate Out Q - Flow Rate COND - Condensate REC - Recovery c/c - Crush Cut FLUOR - Fluorescence DST - Drill Stem Test ROP - Rate Of Penetration FLOW - Flow Rate (gal/min) RPM - Revolutions Per Minute GCM - Gas Cut Mud RTSTM - Rate Too Small To Measure GCW - Gas Cut Water Rw - Resistivity water GTS - Gas To Surface r/r - Ring Residue INJ - Injection of Mist (bbls/hr) SCFM - Standard Cubic Ft/Min (air) LCM - Lost Circulation Material SGCM - Slightly Gas Cut Mud MMCFD - Million Cubic Feet / Day SPM - Strokes Per Minute NGTS - No Gas To Surface SPP - Stand Pipe Pressure NOTS - No Oil To Surface SWC - Side-Wall Core NFTS - No Flow To Surface TG - Trip Gas OCM - Oil Cut Mud WOB - Weight On Bit



Cl: 107k



85/8/4/2/1

85/7/5/3/Tr

80/8/5/4/8

82/8/7/3

SANDSTONE:(Tr)med brn/gry,med gry,vf,v wl srt,sbrnd,com mod strg calc cmt,occ mod wk sil cmt,occ pl gry slty mtx,com blk,tn,off wh,grn liths,mod hd,ti-nil vis por,min fluor only.

SILTY CLAYSTONE:med brn/gry, med gry,med brn,mnr lt gry,arg,aren i/p,com carb spks,com off wh & tn liths,sft frm,occ disp,sbbky,amorph i/p.

Bit 7 : SMITH PB9348
Size: 6" Jets:3x24
In: 3119m Out: XXXXm
Run: XXm Hrs: XX.X hrs
Cond: x-x-xx-x-x-x-xx-xx

